

ARISE

TRANSITION PLANNING



Student Success Toolbox

ARISE Independent Living Center can provide services to assist youth and young adults with disabilities to transition from school to post-secondary education, employment, and independent living.



Benefits Advisement:

When children who receive SSI benefits turn 18, they must be reevaluated as adults. Sometimes this can result in a loss of benefits. ARISE can help you protect your benefits.



Independent Living Skills:

ARISE can assist with developing daily living skills, budgeting, housing and transportation options, recreation/community participation, self-advocacy skills, social skills, and more.



21 Lincoln St, Auburn, NY 13021
(315) 255-3447





CENTERS FOR INDEPENDENT LIVING MAKE COMMUNITY LIVING POSSIBLE

WHAT IS COMMUNITY LIVING?

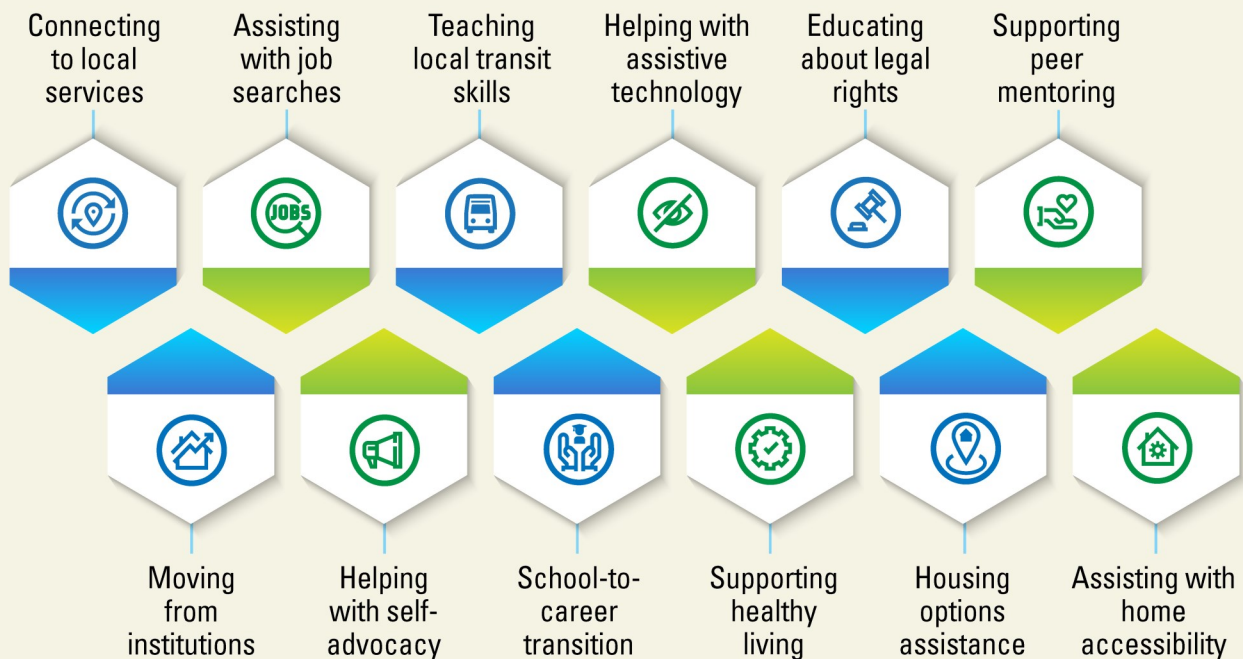
People with disabilities and older adults have the same opportunities as everyone else to:

- Choose for themselves where to live
- Earn a living
- Lead the lives they want
- Make decisions about their lives

WHY COMMUNITY LIVING?

-  People prefer it
-  It usually costs less
-  It's a legal right
-  Everyone benefits when everyone can contribute

HOW DO INDEPENDENT LIVING PROGRAMS HELP?



ARISE

Cayuga County

For more info, go to ariseinc.org or call us at (315) 255-3447

